

Packaging – Processing

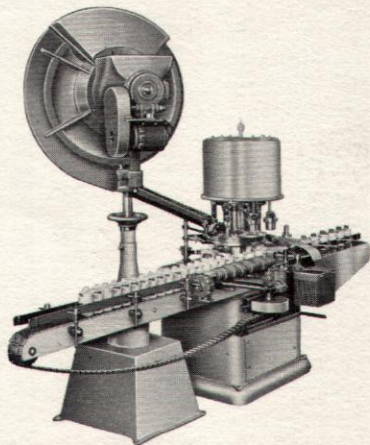
Bid on Equipment

1-847-683-7720

www.bid-on-equipment.com

CAPEM[®]

*...the profitable method
for handling all your
automatic capping needs*



Packaging – Processing

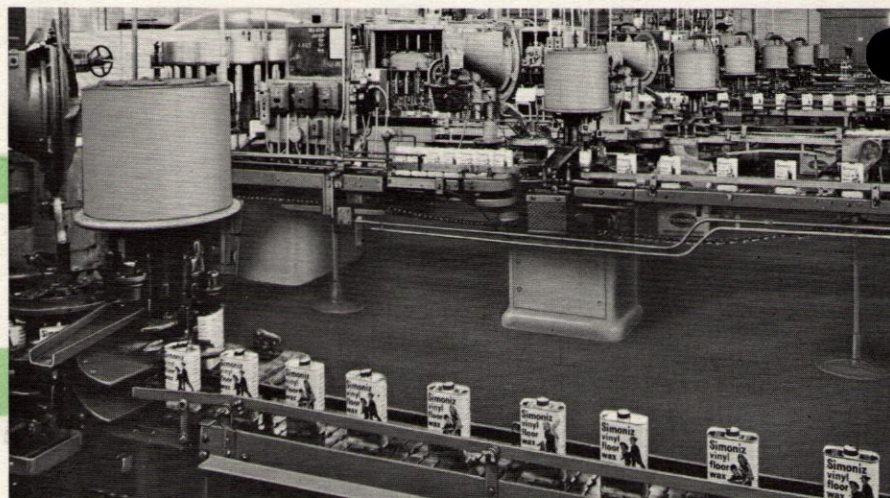
Bid on Equipment

1-847-683-7720

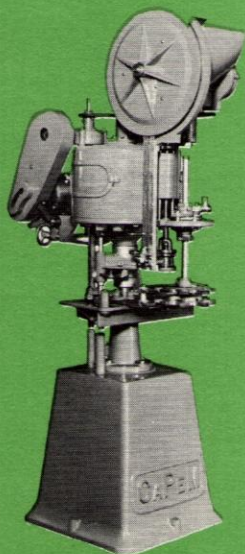
www.bid-on-equipment.com

What to look for in selecting your capping machinery

- 1 You should demand versatile, compact machinery that can handle a wide variety of sizes and shapes in both containers and caps. CAPEM does just that.
- 2 You should look for machines that are *soundly* engineered and easily maintained. CAPEM ranks at the top on both counts.
- 3 And you should ask: Does the machine I am about to acquire represent proven experience. With CAPEM, the answer is YES.

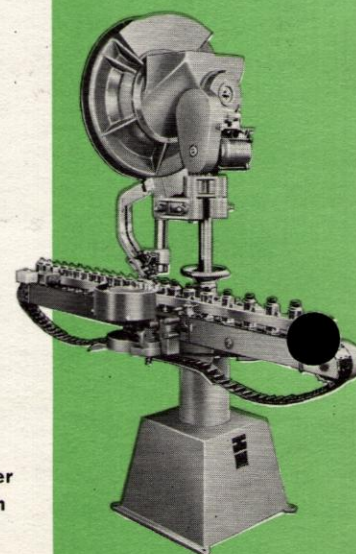


Seven Consolidated Cappers at
Simoniz Company, Kankakee, Illinois

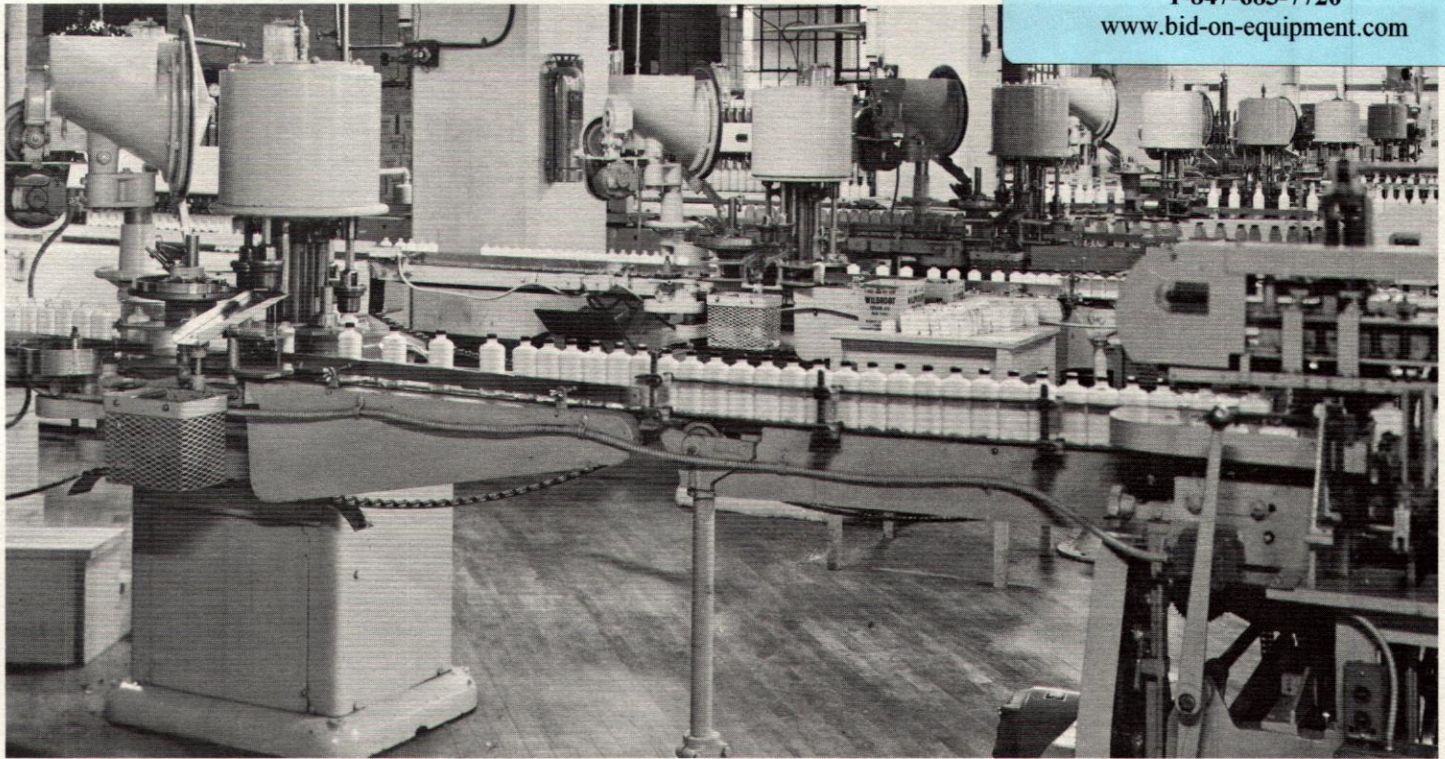


Model S-I-F Capper

CAPEM CAPPING MACHINERY



Model H-O-F Capper
for snap-on caps on
aerosol containers



Seven Consolidated Cappers at the Wildroot Co., Buffalo, N. Y. — Division Colgate Palmolive

You'll find CONSOLIDATED CAPEM machines in
use in every important field where the demand is for VERSATILITY,
DEPENDABILITY, ECONOMY and MINIMUM MAINTENANCE

FOODS: A & P Tea • Alabama-Georgia Syrup Co. • American Stores • Anheuser-Busch • Associated Brands • Beech-Nut Packing • Best Foods • Blue Plate Foods • Borden's • California Packing • Canada Packers, Ltd. • Canada Vinegars, Ltd. • Canadian Cannery (Western) • Carnation Co. • Cross & Blackwell, Ltd. • Durkee's • Folger & Company • R. T. French Company • General Foods • Good Foods Inc. • H. J. Heinz Company • Hills Bros. • Horlick's • Peter Cailler Kohler • Kroger Company • Lever Brothers • Libby, McNeill & Libby • C. C. Lang • McCormick & Co. • Nestle's • Paxton & Gallagher Co. • Penick & Ford • Planter's Nut & Chocolate • Realemon-Puritan Co. • W. B. Roddenberry • A. Schilling & Co. • Sessions Co. • Shedd-Bartush Foods • Southern Cotton Oil • Swift & Company • Woolson Spice Company.

DRUGS Abbott Laboratories • Arner Company • Bayer's • Boot's Pure Drugs, Ltd. • Bristol-Myers • Burroughs Wellcome • Ciba Pharmaceutical • Emerson Drug • J. C. Eno • Johnson & Johnson • Grove Laboratories • Lambert Pharmacal • Lederle Laboratories • Eli Lilly • McKesson & Robbins • McNeil Laboratories • Mentholatum Company • Merck & Company • Miles Laboratories • Norwich Pharmacal • Parke Davis & Co. • Charles Pfizer Company • Charles H. Phillips • Plough, Inc. • Rexall Drug • A. H. Robins, Inc. • G. D. Searle Company • Sharp & Dohme • Smith Kline & French • E. R. Squibb & Sons

• Sterling Drug • Strong, Cobb & Co. • Vick Chemical • White Laboratories • Whitehall Pharmacal • Wyeth's • Zonite Products.

HOUSEHOLD SPECIALTIES: Barton Mfg. Co. • Boyle Midway • Carter's Ink • Clorox Chemical • Drackett Company • DuPont Company • Gillette Safety Razor Co. • Hartz Mountain Products • Hygienic Products Co. • S. C. Johnson • Knomark • Linco Products • Liquid Veneer • Parker Pen • Parson's Ammonia • Procter & Gamble • John Puhl Products • Purex • Roman Cleanser • Sherwin-Williams • Simoniz • Slick Shine Co. • A. E. Staley Mfg. Co. • Stanley Home Products • Texize Chemicals, Inc. • J. R. Watkins.

DISTILLERS, WINERIES, ETC.: American Distilling • Angostura-Wuppermann Corp. • T. G. Bright & Co., Ltd. • British Columbia Distilleries, Ltd. • California Wine Assn. • California Wine Growers • Calvert's • Cameo Vineyards • Canadian Industrial Alcohol, Ltd. • Danforth Wines • Distillers Corp., Ltd. • Eastern Wine • Frankfort Distilleries • Gallo Wineries • Paul Jones & Company • National Distilleries • L. J. McGuinness & Company • Meyer's Rum • Nehi Corp. • Nova Scotia Liquor Commission • Petri Wine Co. • Quebec Liquor Commission • Roma Wines • Ron Rico Corp. • Schenley Distilleries • Joseph E. Seagram & Sons • Standard Brands (Fleisch-

man's) • Hiram Walker & Sons • Widmer Wines • Wine Growers Guild.

REFINERY PRODUCTS: Archer-Daniels-Midland • Beacon Oil Company • Chesebrough Mfg. Co. • Commercial Solvents • Gulf Oil Company • Renuzit Company • Socony Vacuum Oil Company • Standard Oil Co. of New York, Indiana, New Jersey and California • Sun Oil Company • Turpentine & Rosin Factors.

TOILET AND DRUG SPECIALTIES: Barbasol Company • Bristol-Myers Company • Burma Shave • Colgate-Palmolive-Peet Co. • Coty's • F. W. Fitch Company • Andrew Jergens Company • Johnson & Johnson • Lavoris Company • Lucky Tiger Mfg. Co. • The Mennen Company • Pharmacrast Corp. • Pond's Extract Company • Procter & Gamble • Dr. Scholl Mfg. Company • Sterling Products • Toni Co. • Wildroot Company • J. B. Williams Company.

MISCELLANEOUS: American Can Company • American Snuff Co. • Anchor-Hocking Glass Corp. • Armstrong Cork Company • Columbia Specialty Co. • Continental Can Company • Crown Cork & Seal Co. • Eastman Kodak Company • Hazel Atlas Glass Co. • Monsanto Chemical • Phoenix Cap Co. • Rieke Metal Products • Wagner Electric.

CAPEM INSTALLATIONS ACCOUNT FOR A TOTAL PRODUCTION OF OVER 100,000,000 ITEMS DAILY

GENERAL MACHINE SPECIFICATIONS

	S-1-F	C-2-F	C-4-F	C-4-FA	D-2-F	D-4-F	D-6-F	D-8-F	D-10-F
RATED CAPACITY	40	60	120	120	60	120	180	240	300
CAP SIZE (Maximum)	89 mm	89	89	89	89	89	89	89	48
DIAM. LIMIT (Container) ¹	8"	6½"	4½"	4½"	8"	6½"	5"	3"	2"
WEIGHT ²	1200#	1800#	2000#	2150#	1900#	2200#	2300#	2400#	2500#
FLOOR SPACE	24" x 24"	26" x 33"	26" x 33"	26" x 33"	27" x 36"	27" x 36"	27" x 36"	27" x 36"	27" x 36"
CONVEYOR LENGTH ³		8 ft.	8 ft.	8 ft.	10 ft.	10 ft.	10 ft.	10 ft.	10 ft.
CONVEYOR HEIGHT	AS PER CUSTOMERS REQUIREMENTS (ALL MODELS)								
SPEED CONTROL ⁴	STANDARD EQUIPMENT ON ALL MODELS								
OVERALL HEIGHT	6 to 7 ft. Established by conveyor height plus tallest container plus 18" plus other factors.								
MOTORS	½ HP	¾ & ¼	¾ & ¼	¾ & ¼	¾ & ¼	¾ & ¼	¾ & ¼	¾ & ¼	¾ & ¼
CHANGEOVER TIME ⁵	20 Min. to ½ Hr.	½ Hr.	¾ Hr.	¾ Hr.	½ Hr. plus	¾ Hr.	¾ Hr. plus	1 Hr.	1¼ Hr.
CAPPING HEADS—Assemblies	1	2	4	4	2	4	6	8	10

1 Information on maximum container height and diameter to be handled should be made available during original construction.

2 Average weight of machine including fittings for one extra size.

3 Special lengths upon request.

4 Ratio 2 to 1.

5 Estimated average for experienced mechanic.

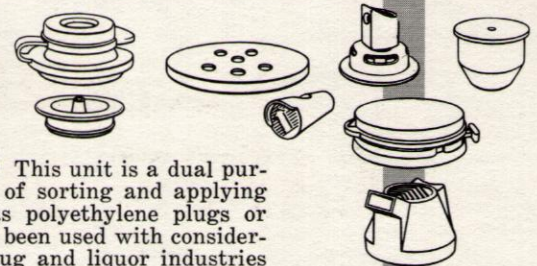
OR, IF YOU HAVE SPECIAL CLOSURE NEEDS ASK FOR MORE FACTS ON:

● **CaPeM H-O-F & H-O-FV:** This unit was originally designed for the sorting and applying of various types of aerosol overcaps to aerosol containers. In addition it has been adapted for polyethylene snap caps for speeds as high as 300 per minute. Speed capacities are normally dependent on the type and size of sorter used. This model is simple in construction and easy to change over with a minimum of extra parts.

● **CaPeM C-4-HB:** This four spindle adaptation is designed for the sorting and applying of various types of can breasts to the can bodies. It incorporates a horizontal sorter for easy handling of the top component and is precision made to handle the tight fitting can breast normally used with this type of container.

● **CaPeM C-4-FC:** This unit is a dual purpose machine capable of sorting and applying screw caps as well as polyethylene plugs or wood top corks. It has been used with considerable success in the drug and liquor industries where space limitations require one machine capable of doing one or the other type of operation. This same combination machine can be built in six or eight spindle sizes.

● **CaPeM C-4-FF:** This dual purpose machine is designed to sort and apply shaker tops to bottles and then apply the final closure. It incorporates a detecting device so that no bottle is capped that does not have a properly applied shaker top. This has been widely used for seasoning salts, bitters and sauces such as barbecue or soy. This too can be built in the six or eight spindle size for higher speeds.



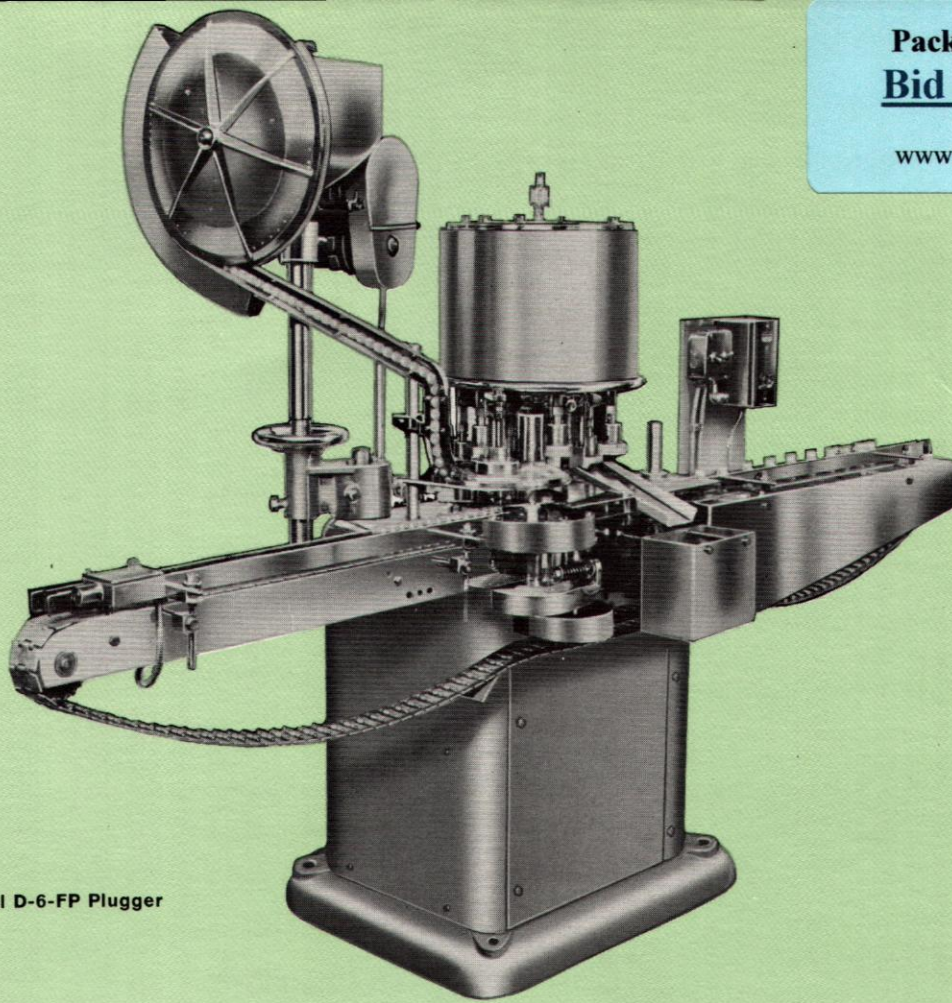
CONSOLIDATED PACKAGING MACHINERY CORP.

1400 WEST AVENUE, BUFFALO, NEW YORK

Packaging - Processing
Bid on Equipment

1-847-683-7720

www.bid-on-equipment.com



Model D-6-FP Plugger

YOU CAN MEET MOST CAPPING NEEDS WITH THESE

9 standard CAPEM models

1 CAPEM S-1-F: Single spindle type — capacity 40 per minute — handles caps to 89 mm — containers up to 8" diam. Designed for use with customer's conveyor unless otherwise specified.

CLASS C — ROTARY MODELS

2 CAPEM C-2-F: 2 spindle rotary — capacity 60 per minute. Caps to 89 mm — containers to 6½" diam. Designed specifically to accommodate large sizes including gallons.

3 CAPEM C-4-F: 4 spindle rotary capacity to 120 per minute. Caps to 89 mm maximum; container diameter 4½"; without equal for requirements falling within this classification.

4 CAPEM C-4-FA: 4 spindle rotary type machine of special design to meet wide range of bottle heights. Quickly adjustable capping head assures accurate registration at high speeds. Endorsed by all leading distilleries.

CLASS D — ROTARY MODELS

Class D machines have been developed primarily for high speed operation on containers with large diameters and have proven eminently successful where such requirements are presented.

5 CAPEM D-2-F: 2 spindle rotary (large radius). Capacity to 60 per minute. Caps to 89 mm — containers to 8" diam. Introducing new production standards on gallon sizes.

6 CAPEM D-4-F: 4 spindle rotary (large radius). Capacity to 120 per minute. Caps to 89 mm — container diameters to 6½". Anticipates future production demands.

7 CAPEM D-6-F: 6 spindle rotary (large radius). Capacity to 180 per minute. Cap maximum 89 mm. Container maximum 5" diam. Offers maximum output on quart and half gallon lines.

8 CAPEM D-8-F: 8 spindle rotary (large radius). Capacity to 240 per minute. Cap maximum 89 mm. Container maximum 3" diam. For high production on small to medium sizes.

9 CAPEM D-10-F: 10 spindle rotary. Capacity to 300 per minute. Cap maximum 48 mm. Container maximum 2" diameter. The last word for maximum production on small to medium sizes.

for quick service on your questions of closures, contact our packaging specialists direct, or get in touch with the representative closest to you...

DONALD R. MILDNUM
16 North Linden Lane
Mendham, New Jersey 07945

KRUSE PACKAGING MACHINERY
5807 West North Avenue
Chicago, Illinois 60639

JOHN C. RAYMOND
1117 Cambridge Lane
Somerville, New Jersey 08876

DAVID S. SHIELDS & CO.
P. O. Box 711
Old Greenwich, Conn. 06870

CAPPER McCALL COMPANY
P. O. Box 473
Marietta, Georgia 30060

JOHN DYNES
3004-B Overton Drive
Greensboro, N. C. 27408

LYTTLETON PACKAGING MACHINERY CO.
2502 Dunlavy Street
Houston, Texas 77006

DUHART PACKAGING EQUIPMENT CO.
2012 Olive Street
St. Louis, Missouri 63103

STEPHEN MACKAY
575 East Remington Drive
Apt. 6-H
Sunnyvale, Calif. 94087

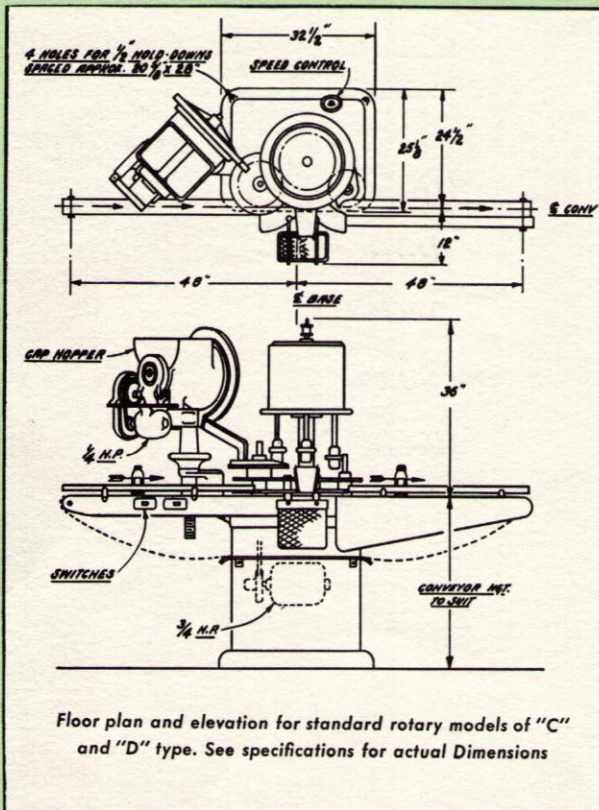
ALAN T. ATKINS
P. O. Box "B"
Milford, Ohio 45150

MARVIN J. HULL
14779 Fairway Drive
Livonia, Michigan 48154

THOMAS W. TURNER
P. O. Box 644
Hudson, Ohio 44236

THE PAUL MOORE COMPANY LTD.
Toronto, Montreal, Winnipeg,
Calgary, Vancouver

NISSHO-IWAI CO. LTD.
Tokyo and Osaka, Japan



CONSOLIDATED PACKAGING MACHINERY CORP.

1400 WEST AVENUE, BUFFALO, NEW YORK 14213



Packaging - Processing
Bid on Equipment

1-847-683-7720

www.bid-on-equipment.com